

# Cable sleeve - CES-STPG-GY-2X5

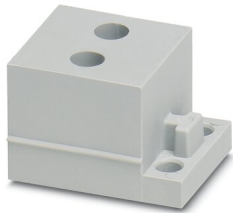


0801708

<https://www.phoenixcontact.com/pc/products/0801708>

Please be informed that the data shown in this PDF document is generated from our Online Catalog. Please find the complete data in the user documentation. Our General Terms of Use for Downloads are valid.

---



Cable sleeve, no. of conductors: 2, length: 29.5 mm, width: 19.5 mm, height: 17 mm, external cable diameter: 2x 4 mm ... 5 mm

---

## Product Description

Slotted cable sleeve

# Cable sleeve - CES-STPG-GY-2X5



0801708

<https://www.phoenixcontact.com/pc/products/0801708>

## Commercial Data

Item number	0801708
Packing unit	10 pc
Minimum order quantity	1 pc
Product Key	BF7CCX
Catalog Page	Page 681 (C-2-2019)
GTIN	4046356675093
Weight per Piece (including packing)	7.45 g
Weight per Piece (excluding packing)	7.45 g
Customs tariff number	40169997
Country of origin	PL

# Cable sleeve - CES-STPG-GY-2X5

0801708

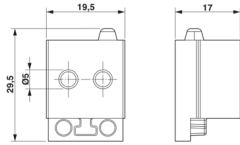
<https://www.phoenixcontact.com/pc/products/0801708>

## Technical Data

### Product properties

Product type	Cable sleeve
No. of conductors	2

### Dimensions

Dimensional drawing	
Width	19.5 mm
Height	17 mm
Length	29.5 mm

### Material specifications

Color	gray
Material	SEBS
Material	SEBS (halogen-free)
Flammability rating according to UL 94	V0

### Connector

Seal size	small
Material	SEBS
Material	SEBS

### Cable / line

Cable structure	
External cable diameter	2x 4 mm ... 5 mm

### Environmental and real-life conditions

Ambient conditions	
Degree of protection	IP54
Ambient temperature (operation)	-40 °C ... 80 °C (static)

# Cable sleeve - CES-STPG-GY-2X5

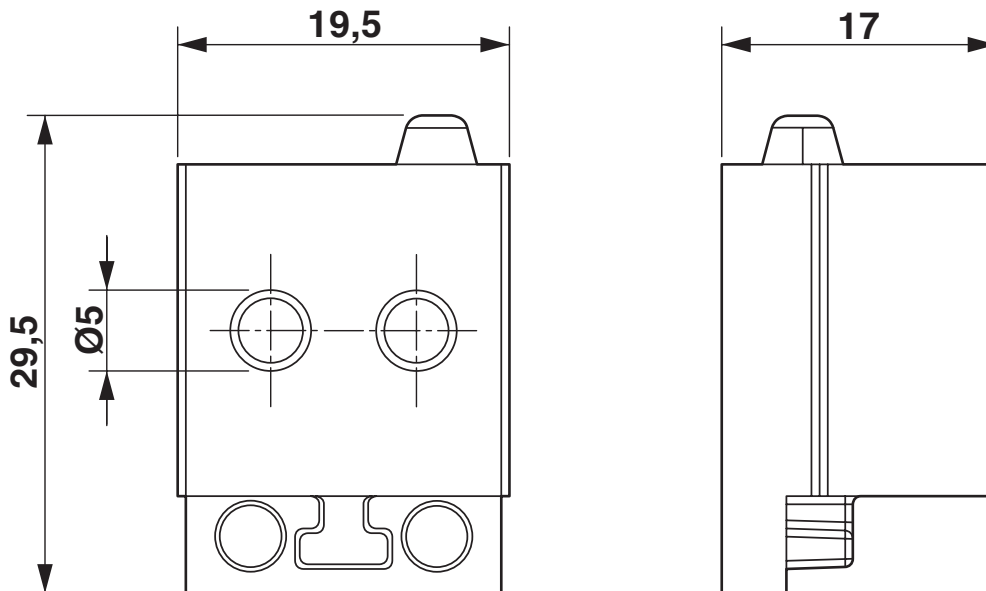
0801708

<https://www.phoenixcontact.com/pc/products/0801708>



## Drawings

Dimensional drawing



Dimensional drawing

# Cable sleeve - CES-STPG-GY-2X5



0801708

<https://www.phoenixcontact.com/pc/products/0801708>

## Approvals



**cUL Recognized**

Approval ID: NITW8.E255026



**UL Recognized**

Approval ID: NITW2.E255026

**DNV**

Approval ID: TAE00003VJ

**cULus Recognized**

# Cable sleeve - CES-STPG-GY-2X5



0801708

<https://www.phoenixcontact.com/pc/products/0801708>

## Classifications

### ECLASS

ECLASS-9.0	27144425
ECLASS-10.0.1	27144425
ECLASS-11.0	27144425

### ETIM

ETIM 8.0	EC000451
----------	----------

### UNSPSC

UNSPSC 21.0	39121400
-------------	----------

# Cable sleeve - CES-STPG-GY-2X5



0801708

<https://www.phoenixcontact.com/pc/products/0801708>

## Environmental Product Compliance

China RoHS	Environmentally friendly use period: unlimited = EFUP-e
	No hazardous substances above threshold values

# Cable sleeve - CES-STPG-GY-2X5

0801708

<https://www.phoenixcontact.com/pc/products/0801708>



## Accessories

### Filler plugs

Filler plugs - KDT-ST 5 - 3063947

<https://www.phoenixcontact.com/pc/products/3063947>



Filler plugs, length: 25 mm, diameter: 5 mm

---

Phoenix Contact 2022 © - all rights reserved  
<https://www.phoenixcontact.com>

PHOENIX CONTACT GmbH & Co. KG  
Flachmarktstraße 8  
D-32825 Blomberg  
+49 (0) 5235-3 00  
[info@phoenixcontact.com](mailto:info@phoenixcontact.com)